

24/00516/S73

Land At Whitford Road Bromsgrove

Proposal to amend condition 22 No dwelling shall be occupied until the acoustic fencing on the north-western part of the site has been erected in accordance with a scheme which has been submitted to and approved in writing by the local planning authority. The acoustic fencing shall be retained thereafter.

Recommendation: Delegated, minded to grant

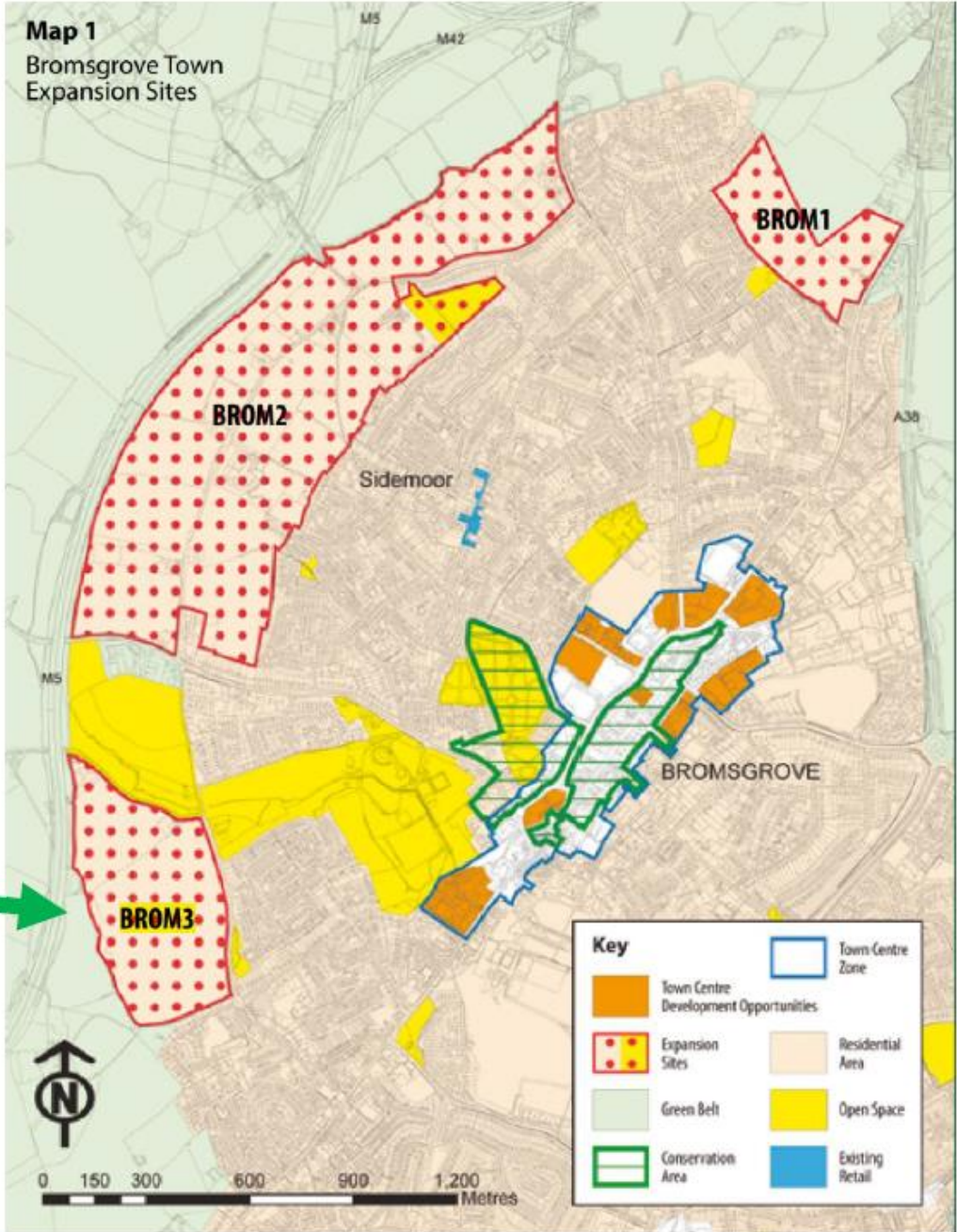
FROM:

No dwelling shall be occupied until the acoustic fencing on the north-western part of the site has been erected in accordance with a scheme which has been submitted to and approved in writing by the local planning authority. The acoustic fencing shall be retained thereafter.

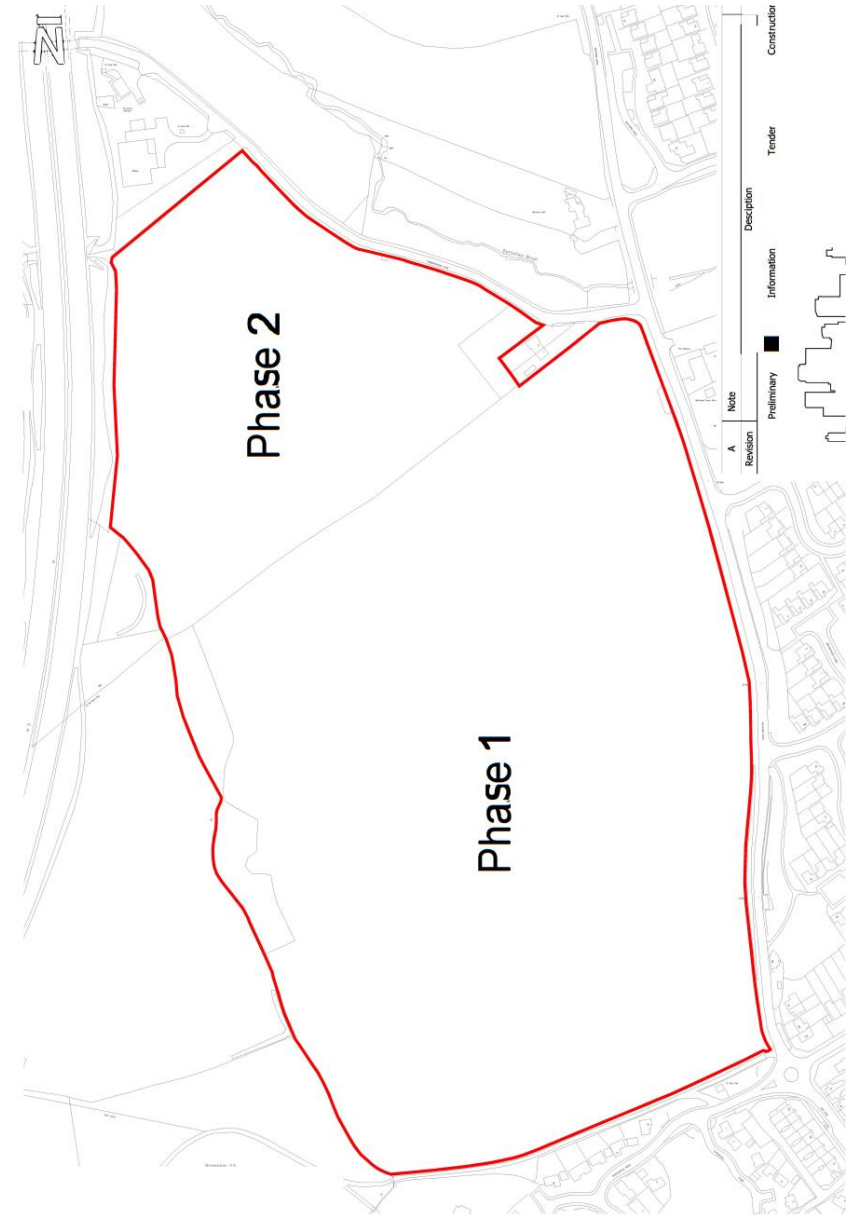
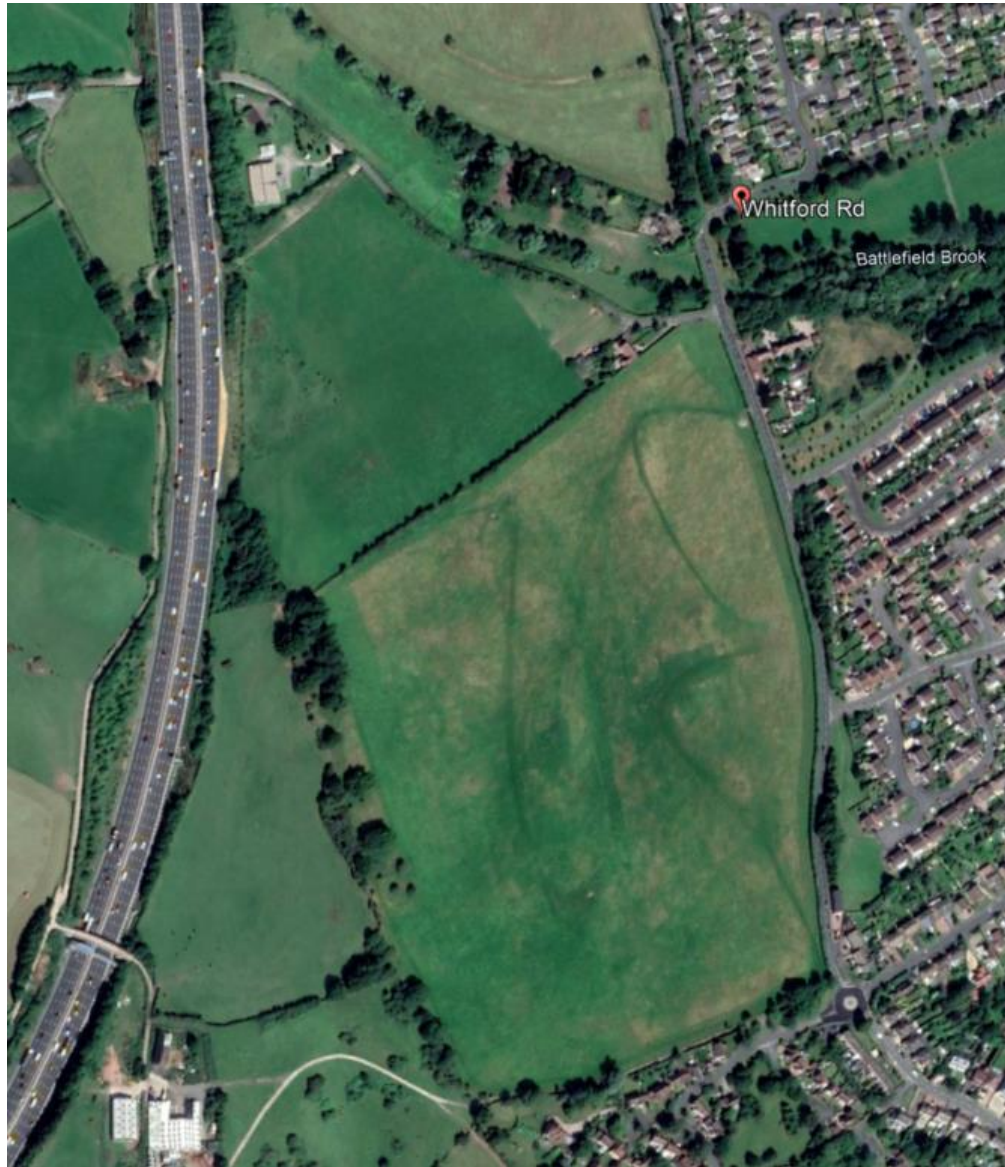
TO:

No dwelling shall be occupied in relation to the approved reserved matters 23/00993/REM (Miller Homes phase) including plots 291 to 293 & plots 342 to 353 only of the approved reserved matters 22/00090/REM (Bellway Homes phase) or subsequent variations thereof until the acoustic fencing on the north-western part of the site, has been erected in accordance with a scheme which has been submitted to and approved in writing by the local planning authority. The acoustic fencing shall be retained thereafter and must be erected before 22/00090/REM (Bellway) plots 291 to 293 & plots 342 to 353 or subsequent variations thereof are occupied. Noise mitigation measures (glazing, ventilation and garden fences) shall be carried out in accordance with the Environmental Noise Assessment (22336-1-R8) prepared by Noise.co.uk dated 25th October 2024.

Application site in relation to Bromsgrove District Plan site – BROM 3



Aerial View & Site A



Bellway Homes approved site layout

